

ON WAVE MODELLING IN MIKE 21 - OVERVIEW AND PERSPECTIVES

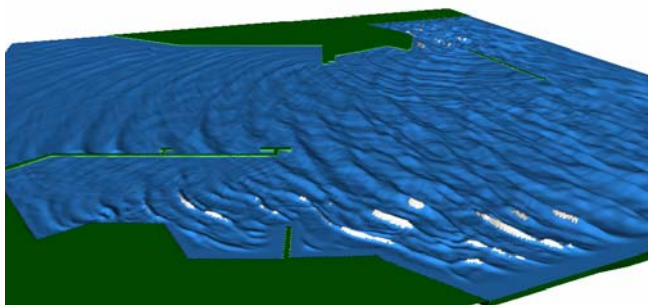
Henrik Kofoed-Hansen and Ole René Sørensen
DHI Water & Environment, Agern Allé 5, DK-2970 Hørsholm, Denmark,
Fax: +45 45 16 92 92, e-mail: hkh@dhigroup.com

ABSTRACT

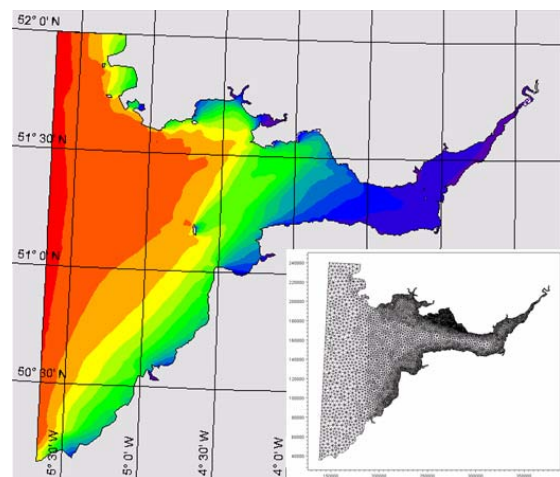
The overall objective of this presentation is to provide an overview of the present wave modelling technologies included in the MIKE 21 software package. This overview covers model capabilities, best practice and limitations illustrated by a number of applications.



This presentation also includes a thorough description of DHI's new generation of spectral (or phase-averaging) wave models (included in MIKE 21 SW), which is more powerful, accurate and user-friendly. The model simulates the growth, decay and transformation of wind-generated waves and swells in offshore and coastal areas on unstructured meshes. In this paper we shall go in more details on the extensive list of new features included in the forthcoming Release 2007.



Phase-resolving wave modelling using
MIKE 21 BW



Phase-averaging wave modelling using
MIKE 21 SW